

ALB

**PIT &
PAD
DOCK
EQUIPMENT**



The Intercomp tools not only ensure accuracy and reliability in measurements but also light weight and strength during transport.

The extensive range offers a model for all needs, both technical and economic.

Gieffe Racing ensures a quick and qualified service. All scales are warranted against manufacturing defects for 24 months from date of purchase.



Intercomp SW787 scales system

- Featuring PERFECT WEIGH™
- Displays Setups to One Hundredth of a Percent!
- Intercomp's PC Wireless Scale Systems combine our ultra accurate Billet Scale Pads with Intercomp's tested & proven advanced RFX™ Wireless Weighing Technology.
- Systems use Intercomp's RaceWeigh™ Software & four Billet Scale Pads with integrated RFX™ Wireless Weighing Technology to transmit data from the scale pads to a PC. Software compatible with: Windows® 2000, Windows® XP, Vista™ & Windows® 7.
- 1,500 lb (700 kg) Pad Capacity
- 6,000 lb (2,800 kg) System Capacity
- Fully Integrated RFX™ Wireless Technology
- Encryption Ensures Secure Wireless Communication
- RS232 Output to Printer
- Certified to 0.1% Accuracy
- Store & Recall Chassis Setups
- Baseline Setup Recall
- Center of Gravity Calculation
- User Selectable Display Modes
- Target Tune Feature
- View ANY Combination of Scale Pad Weight & Percentage
- 400hr Average Battery Life in Pads
- PC Not Included

System Includes:
 15" x 15" x 2.5" (381 x 381 x 64mm) Wireless RFX™ Billet Pads
 RaceWeigh™ Software for PC (PC Not Included)
 AA Alkaline Batteries for Scale Pads
 2-Year Warranty

Code	Description
170154-PC	Intercomp SW787™ Wireless Scale System



Intercomp MICROFLEX scales system

- Get extreme precision & ultra-low deflection... with four load cells per pad!
- 1,000 Kg Pad capacities
- 4,000 Kg System capacities
- Four Load Cells per Pad
- Ultra Low Deflection Scale Pads
- Highest Level Accuracy, Repeatability & Stability for Consistent Chassis Setup
- Transmit Weight Data from the Indicator to a Mobile Device Using Bluetooth® Technology
- USB & RS232 Output
- Stores 100 Chassis Setups
- Baseline Setup Recall
- Center of Gravity Calculation
- User Selectable Display Modes
- Target Tune Feature
- PERCENTWEIGH™ Weight Percentages Displayed in Hundreds
- Weights Displayed on RFX™ Indicator & in RaceWeigh™ Software Simultaneously
- View ANY Combination of Scale Pad Weight & Percentage
- 400hr Average Battery Life in Pads
- PC Not Included

SYSTEM INCLUDES:
 - 15" x 15" x 2.5" (381 x 381 x 64mm) Wireless RFX™ Billet Pads
 - One-Touch Wireless Indicator with Rechargeable Batteries, Battery Charger & Case
 - RaceWeigh™ Software & Wireless Node
 - Two AA Alkaline Batteries Per Scale Pad
 - 2-Year Warranty

Code	Description
170325	MICROFLEX™ - Precision 4 load cell scale system Bluetooth - 4000 kg
170326	MICROFLEX™ - Precision 4 load cell scale system Bluetooth - 7300 kg





Intercomp
SW777RFX scales system

Now Includes BLUETOOTH®
Fully Integrated RFX™ Wireless Technology
Encryption Ensures Secure Wireless Communication
USB & RS232 Output
Certified to 0.1% Accuracy
1,500 lb (700 kg) Pad Capacity
6,000 lb (2,800 kg) System Capacity
Weights Displayed on RFX™ Wireless Indicator & in RaceWeigh™ Software Simultaneously
Stores 100 Chassis Setups
Baseline Setup Recall
Center of Gravity Calculation
User Selectable Display Modes
Target Tune Feature
Giant 0.5" Display Characters
View ANY Combination of Scale Pad Weight & Percentage
400hr Average Battery Life in Pads
Featuring PERCENT WEIGH™
Displays Setups to One Hundredth of a Percent!
System Includes:
15" x 15" x 2.5" (381 x 381 x 64mm) Wireless RFX™ Billet Pads
One-Touch Wireless Indicator with Rechargeable Batteries, Battery Charger & Case
Race Car Management Software
RaceWeigh™ Software & Wireless Node
Pad Storage Case
USB Cable for PC (PC not included)
AA Alkaline Batteries for Scale Pads
2-Year Warranty

Code	Description
170320	Intercomp SW777RFX™ Wireless Professional Scale System BLUETOOTH®



Intercomp
SW650RFX scales system

Fully Integrated RFX™ Wireless Weighing Technology
Transmit Weight Data from the Indicator to a Mobile Device Using Bluetooth® Technology
Encryption Ensures Secure Wireless Communication
USB & RS232 Output
Certified to 0.1% Accuracy of Applied Load, or ±1 Graduation, Whichever is Greater
1,500 lb (700 kg) Pad Capacity
6,000 lb (2,800 kg) System Capacity
PERCENTWEIGH™ Weight Percentages Displayed in Hundredths
Stores 100 Chassis Setups
Baseline Setup Recall
Center of Gravity Calculation
User Selectable Display Modes
Target Tune Feature
Giant 0.5" Display Characters
Backlit for Low-Light Conditions
View ANY Combination of Scale Pad Weight & Percentage
400hr Average Battery Life in Pads
System Includes:
- 15" x 15" x 2.5" (381 x 381 x 64mm) Wireless RFX™ Billet Pads
- One-Touch Wireless Indicator with Rechargeable Batteries, Battery Charger & Case
- Two AA Alkaline Batteries Per Scale Pad
- 2-Year Warranty

Code	Description
170319	Intercomp SW650RFX™ Wireless Quick Weight Scale System BLUETOOTH®



Intercomp
SW500 scales system

Featuring "PERCENT WEIGH" Displays Setups to One Hundredth of a Percent! 1,500 lb (700 kg) Pad Capacity, 6,000 lb (2,800 kg) System Capacity
USB & RS232 Output
Certified to 0.1% Accuracy
Stores 100 Chassis Setups
Baseline Setup Recall
Center of Gravity Calculation
User Selectable Display Modes
Target Tune Feature
Giant 0.5", Backlit, Display Characters
View ANY Combination of Scale Pad Weight & Percentage
Standard 9-Volt Battery Operation
System Includes:
15" x 15" x 2.5" (381 x 381 x 64mm) Billet Scale Pads
Cabled Indicator with Case
Standard 9-Volt Battery
2-Year Warranty

Code	Description
170125	Intercomp SW500™ E-Z Weight Scale

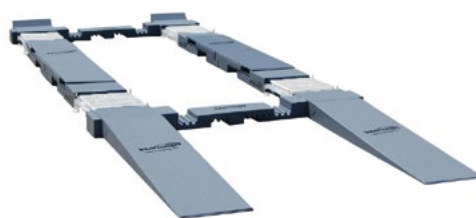
SCALES ACCESSORIES



Intercomp
Scales accessories

Set of Four
Low-Profile Ramp for 2.5" (64mm) Scale Pads
Light-Weight, Aluminum Design
Dimensions: 15" x 15" (381 x 381mm)

Code	Description
100342	Ramp for scale pads (set of 4)



Precision machined out of super-dense foam, this lightweight, easy-to-transport rack system includes ramps, adjustable pontoons and bridges, and front roll-offs. - Made In The U.S.A.
 - Made to Work with 2.5" (64mm) Profile Scales
 - Lower Cost Alternative to Metal Racks
 - Lightweight Construction Means Easy Transport for a Full Rack Set-Up Anywhere
 - Easy & Quick Set Up
 - Adjustable For Different Wheelbases & Track Widths
 - 100% Solid Construction Supports Up To a 6,000lb (2,721kg) Vehicle
 - High Grip Coating Won't Slip or Slide & Won't Scratch Or Mark Up Your Floors
 - Movable Ramps Create Flexible Loading & Unloading Of Vehicles
 SPECS:
 - Total System Weight: 144lbs (65kg)
 - Wheelbase Adjustable from 84" to 110" (2,133 to 2,794mm)
 - Track Width Adjustable from 49.5" to 64" (1,257 to 1,625mm)
 - Approach Angle: 4.6"
 - Up/Down Ramps Measure: 57"x16"x5" (1,448x406x127mm)
 - Bridges Measure: 16"Wx5"H (406x127mm)
 - Roll-off Area Measures: 16"Wx12"L (406x305mm)



Intercomp
Scales accessories

Set of Four
For any 15" x 15" (381 x 381mm) Scale Pad with a 2.5" (64mm) or 4" (100mm) Profile
High-Quality Steel Construction with a Powder Coat Finish
Dimensions: 15.5" x 15.5" (395 x 395 mm)

Code	Description
100344	Scale pad leveler (set of 4)

Intercomp
Scale rack system

Levelers not included!

Code	Description
171000	Quik Rack Scale Rack - no levelers

Intercomp
Scale rack system + levelers

Levelers included!

Code	Description
171001	Quik Rack Scale Rack With Levelers



Intercomp
Scales accessories

SET OF FOUR (4)
Designed to Fit Any 15" (381mm) Scale Pad with 2.5" (64mm) Pad Thickness
Enables Car to be Rolled On & Off the Scale Pad with Little Effort
Aluminum Construction
Dimensions: 31" x 15.5" (787 x 395mm)

Code	Description
170133	2.5" Scale pad leveler with Roll off pad

Intercomp
Scales accessories

The iRaceWeight™ from Intercomp is suitable for use with any of their RFX wireless scale systems and transforms your iPhone, iPad or iPod into a display screen / data recording device for corner weights. You can View and save live weights and export the data to spreadsheet for future analysis. Sample reports can be emailed and an encryption ensures your wireless connection is secure. The iRaceweigh app is available for free download from the iTunes store. Image for illustration purpose only, iPhone not included.

Code	Description
170250	Intercomp iRaceWeight™ Module for iPhone - iPod - iPad



Intercomp
Scales accessories

Lightweight ramps to make pulling up onto scale pads easier.
 - 14"L x 2.5"H x 12"W (360x64x305mm)
 - 7.8° Incline
 - Solid Construction, Supports Up To a 6,000lb (2,721kg) Vehicle
 Textured Exoskeleton Provides Extra Strength & Prevents Slipping
 (SET OF 4)

Code	Description
171002	Quik Ramp Scale Ramps



Intercomp
Scales accessories

Down Ramps enable "drive-over" capability on our Quik Rack Scale Racks.
 (SET OF 2)

Code	Description
171004	Quik Rack Scale Rack Down Ramps



Intercomp
Scales accessories

Easily roll your car off and on scale pads to release bind. Designed to fit 2.5" tall scale pads.
 - 30"L x 2.5"H x 12"W (762x64x305mm)
 - 7.8° incline
 - 12" (305mm) Roll-Off Area
 - Solid Construction, Supports Up To a 6,000lb (2,721kg) Vehicle
 - Textured Exoskeleton Provides Extra Strength & Prevents Slipping

Code	Description
171005	Quik Ramp Scale Ramps With Roll-off



Intercomp
Scales accessories

Carries four 2.5" (64mm) Scale Pads
 Includes Scale Pad Dividers
 Dimensions: 17.75" x 17.75" x 13.5" (450 x 450 x 343 mm)

Code	Description
490197	Scale 2.5" Pad Case



Intercomp
Scales accessories

- Level pads, roll-offs or setup racks
 - Laser sighting with a virtually unlimited range
 - Use with all scale systems, roll-offs & racks
 - Includes case & laser enhancing glasses

Code	Description
171007	LASER LEVELING SYSTEM FOR SCALE PADS

ALIGNMENT EQUIPMENT



Intercomp
Spring testers

Portable, Digital Force with Travel Indication
Large 0.5" (13mm) Display
Knurled Pressure Relief Knob
Peak Hold Feature
Quick, Single-Pin Vertical Adjustment
Handles Flat/Coil-Over Springs up to 6" (150mm) in Diameter & 18" (457mm) High
Standard 9-Volt Battery Operation
Accuracy ±0.25%
Travel: 4" (100mm)
Recommended by the leading spring manufacturers.

Code	Spring type	Capacity
100059	Coil spring	2.500 Kg
100061	Coil spring	1.000 Kg



GIEFFE
Levels and gauges

Pro360 Digital Protractor is a revolutionary measuring tool that provides instant digital reading of all angles in a range of 360°. (90° x 4)
Features
LCD display easier to read than that overturns intelligently when the unit is turned upside down.
Max accuracy: +/- 0.1° and maximum resolution of 0.1°
The unit can easily be recalibrated to factory settings without special tools. Aluminum structure

Code	Description
PRO360	Digital Protractor



Intercomp
Levels and gauges

Mechanical turn plate with the same construction as Intercomp's Digital Turn Plate, but utilizes precise CNC machined numbers
Range from ±35° (70° Total)
Can be zeroed with car in place
Dimensions: 13" x 15" x 1.625" (330 x 380 x 41mm)
2 pcs Kit

Code	Description
102007	Mechanical turn plate (set of 2)



Intercomp
Levels and gauges

2,000lb Capacity
3-Axis movement
High-strength bearings
Large, easy-to-read electronic display
0.1° Graduation
Range of ±30° (60° Total)
Light-weight aluminum construction
Can be placed on top of scale pads
Standard 9-Volt battery operation
Dimensions: 13" x 15" x 1.625" (330 x 380 x 41mm)
2 pcs Kit

Code	Description
102191	Digital turn plate (set of 2)



Intercomp
Levels and gauges

Digital caster/camber with magnetic adapter and case. Indicates to 1/10 of a degree and now features a 15° or 20° caster/camber reading. Up to 10 times greater accuracy than traditional competitor's bubble gauges. Standard 9-volt battery gives up to 100 hours of operation. Lightweight, aluminum design, with auto shutoff and inclinometer mode for pinion and strut angles. Push button On/Off
Caster/Camber select with built-in diagnostic mode for resetting camber zero. Backlit for night use

Code	Description
100005	Digital Caster/Camber with magnetic adapter and case
100008	Digital Caster/Camber with case



Intercomp
Levels and gauges

Rugged design with two types of clamps guarantees a secure fit.
Use with Digital Caster/Camber Gauge or Bubble Caster/Camber Gauge.
Rim clamp standard 17.5" Maximum

Code	Description
100007	Rim clamp standard 17.5" Maximum
100009	Rim clamp oversize 25" Maximum



Intercomp
Levels and gauges

Locate Angles Digitally
Large LCD Display
Magnetic Base & Sides
Reads from 0° - 90° in 0.05° Increments
Display Rotates 180°
Backlit for Night Use
Standard 9-Volt Battery Operation

Code	Description
102144	Digital angle gauge



Intercomp
Levels and gauges

Great tool for Repair Shops or Expensive Aluminum Wheel Applications
Ideal Tool for Any Competitive Motorsport Set-Up Process
Perfect to use with Intercomp's Digital or Bubble Caster/Camber Gauge or Digital Angle Finder
Fits Most Any Size Wheels from 5" to 24" (127 to 610mm) diameters
Heavy Duty Construction

Codice	Descrizione
360201	"Dunlop style" wheel adapter



Intercomp
Levels and gauges

Industry's Highest Accuracy Bubble Gauge!
CNC-machined, billet, aluminum housing with easy-to-read bubble display. Measures -6 to +6 degrees of camber and -8 to +8 degrees of caster with 0.25 degree accuracy. With magnetic adapter and case.

Code	Description
102010	Bubble Caster/Camber with magnetic adapter



Intercomp
Levels and gauges

Industry's Highest Accuracy Bubble Gauge!
CNC-machined, billet, aluminum housing with easy-to-read bubble display. Measures -6 to +6 degrees of camber and -8 to +8 degrees of caster with 0.25 degree accuracy. With case.

Code	Description
102011	Bubble Caster/Camber (no adapter)



Intercomp
Levels and gauges

Great tool for Repair Shops or Expensive Aluminum Wheel Applications
Ideal Tool for Any Competitive Motorsport Set-Up Process
Perfect to use with Intercomp's Digital or Bubble Caster/Camber Gauge or Digital Angle Finder
Fits Most Any Size Wheels from 5" to 24" (127 to 610mm) diameters
Heavy Duty Construction
WITH DIGITAL ANGLE GAUGE

Codice	Descrizione
360202	"Dunlop style" wheel adapter with angle finder

DUROMETERS - DEPTH GAUGES, HYGROMETERS



Intercomp
Durometers

Reads from 0-99.5
Push-Button Zero
Peak Hold Feature
Includes case.

Code	Description
102091	Digital Tyre Durometer



Intercomp
Depth gauges

Measures Depth in 0.0005" & 0.0127mm Increments
Depth Range of 0-0.25" (0-6.35mm)
Accuracy of ± 0.001
Billet Aluminum Base
Four Point Design Improves Repeatability
Large 0.5" Digital Display
Includes case

Code	Description
102081	Billet Digital Depth Gauge



Intercomp
Durometers

The surface of a tire becomes harder with every heat cycle and even new tires of the same compound can vary a great deal in hardness. If a tire is too soft for the track, it will overheat and may not last the entire race, but if it is too hard, it will not get up to the optimum temperature and traction will be sacrificed. Intercomp's Tire Durometer enables you to make the correct tire selections for any track.
Type-A Removable Tip
Reads from 0-100
Adjustable face
Zero Dial
ASTM Certified
Includes case.

Code	Description
360092	Tire hardness durometer



Intercomp
Depth gauges

Measures tire wear in 1mm & 1/32" increments
Aluminum construction
Includes case

Code	Description
360109	Tire Tread Depth Gauge



Intercomp
Humidity and Temperature meters

Code	Description
360036	Tire Humidity/Temperature Meter



PYROMETERS & INFRARED GUNS



Intercomp
Pyrometers & Infrared Guns

Temperature Range of 0°-1,500°F (-18°-815°C)
 Indication to 2,000°F (1,093°C) with Optional Brake Probe
 Coiled Probe Cord
 Hold Feature
 Indication in 1° or 0.1° Increments
 Displays in °F or °C
 Includes Tire Probe & Case

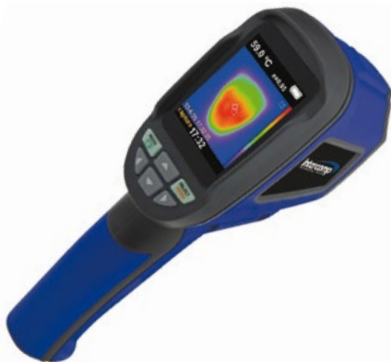
Code	Description
360012	Deluxe Digital Pyrometer



Intercomp
Pyrometers & Infrared Guns

-58°- 1,022°F (-50°- 550°C)
 Accuracy ± 2% of reading
 Resolution 0.1°
 Backlit LCD Display
 Standard 9-Volt battery
 Includes pouch.

Code	Description
360018-E	Infrared Laser Temperature Gun



Intercomp
Pyrometers & Infrared Guns

Thermal imager features

- -4° to 575 F (-20° to 300° C)
- Accuracy ± 2% of Reading
- .25° F (.15° C) Sensitivity
- 2.4" High-Resolution Viewing Screen
- Save Images onto MicroSD Card
- 4 AA Batteries
- 320 g weight
- Includes Pouch

Code	Description
175000	Thermal Imaging Camera



Intercomp
Pyrometers & Infrared Guns

Brake probe - up to 1093°C

Code	Description
360022	Replacement brake probe



Intercomp
Pyrometers & Infrared Guns

Optional tire probe for Intercomp's Pyrometer
 To 1,500°F (815°C)

Code	Description
360025	Pyrometer Tire Probe

AIR PRESSURE GAUGES



Intercomp
Digitale Intercomp

This ultra quick, high accuracy, digital gauge is the choice of professionals in all types of motorsports. Easy-To-Read, 0.5" display
Reads to 99.99 PSI
Selectable in 0.01 Increments
High Accuracy
PSI, BAR, kg/cm²
Keypad Calibration
Pushbutton Zero
Peak Hold
Thumb-Operated Bleed-Off
22" Hose
Backlit Display for Night Use
Ball or 45-Degree Swivel Chuck
Includes case

Code	Type	Scale	Display	Note
360045	Digital	0-7 Bar (0-100 PSI)	Digital 0,5 "	45° Chuck
360045-BC	Digital	0-7 Bar (0-100 PSI)	Digital 0,5 "	Ball Chuck



Stack
Digitale Stack

Minute changes in tyre pressures can have a pronounced effect on vehicle performance and lap times. Stack's experience working with teams at the very highest level of motorsport with our Professional Tyre Pressure and Temperature Monitoring systems have illustrated the need for correctly set tyre pressures requiring accurate and repeatable measurement results. Designed with the motorsport technician and paddock use in mind, the Stack Professional Tyre Pressure Gauge delivers superior performance and durability utilising solid state electronics with signal conditioning circuitry for temperature and calibration compensation providing high precision readings (+/-0.25%) and unrivalled reliability.

Code	Type	Scale	Display	Note
ST262163	Digital	0-3,45 Bar (0-50 PSI)	Digital 30 x 13 mm	Unit of measure PSI, Bar, MPa



Intercomp
Digitale con c/s

0-150 PSI (0-10 BAR)
Readout in 0.1 Increments
Delivers Unsurpassed Accuracy via the Digital Gauge
Displays in PSI, BAR & kg/cm²
Available with Ball or Angle Chuck

Code	Type	Scale	Display	Note
360094	Digital Fill, Bleed & Read	0-10 Bar (0-150 PSI)	Digital 0,5 "	45° Chuck



Intercomp
Meccanico

Analog air pressure gauges include a high-quality, thumb operated bleeder and nozzle. High visibility with major and minor graduation marks.

Code	Type	Scale	Display	Note
360058	Analog	0-15 PSI	4" Glow-in-the-dark	0.5 PSI Increments
360059	Analog	0-30 PSI	4" Glow-in-the-dark	1 PSI Increments
360060	Analog	0-60 PSI	4" Glow-in-the-dark	1 PSI Increments
360062	Analog	0-15 PSI	2"	0.2 PSI Increments
360063	Analog	0-30 PSI	2"	0.5 PSI Increments
360064	Analog	0-60 PSI	2"	0.5 PSI Increments
360065	Analog	0-15 PSI	2.5" Liquid Filled	0.2 PSI Increments
360066	Analog	0-30 PSI	2.5" Liquid Filled	0.5 PSI Increments
360067	Analog	0-60 PSI	2.5" Liquid Filled	1 PSI Increments
360068	Analog	0-15 PSI	2.5" Glow-in-the-dark	0.2 PSI Increments
360069	Analog	0-30 PSI	2.5" Glow-in-the-dark	0.5 PSI Increments
360070	Analog	0-60 PSI	2.5" Glow-in-the-dark	1 PSI Increments
360071	Analog	0-1 Bar	4" Glow-in-the-dark	0.02 Bar Increments
360072	Analog	0-2 Bar	4" Glow-in-the-dark	0.05 Bar Increments
360073	Analog	0-4 Bar	4" Glow-in-the-dark	0.10 Bar Increments
360078	Analog	0-100 PSI	4" Glow-in-the-dark	1 PSI Increments

AIR PRESSURE GAUGES



Intercomp
Meccanico con c/s

Intercomp's "Fill, Bleed, and Read" Air Gauges attach directly to your air or nitrogen hose and have transformed a tedious process into one smooth and easy operation. Standard features include a high quality, 4" pressure gauge with rubber protective boot, a 22" Hose with a high quality swivel nozzle, and an industrial-grade bleeder valve. The air chuck never leaves the valve stem.

Code	Type	Scale	Display	Note
360086	Analog Fill, Bleed & Read	0-30 PSI	4"	1 PSI Increments
360087	Analog Fill, Bleed & Read	0-60 PSI	4"	1 PSI Increments
360088	Analog Fill, Bleed & Read	0-100 PSI	4"	1 PSI Increments
360089	Analog Fill, Bleed & Read	0-2 Bar	4"	0.05 Bar Increments
360090	Analog Fill, Bleed & Read	0-4 Bar	4"	0.10 Bar Increments



Intercomp
Per ammortizzatori

Shock inflation & pressure, analog or digital. Scale 0-20 Bar (0-300 PSI)

Code	Type	Scale	Display	Note
100675	Digital	0-20 Bar (0-300 PSI)	Digital 0,5 "	For damper
100675-A	Analog	0-20 Bar (0-300 PSI)	1,5"	For damper

ACCESSORIES



Spares accessories

MultiChron memory allows you to record the times of 4 competitors, up to 99 laps for each, and their succession. Plus, you can record up to 9 split times per lap! Extremely light (100 g. Batteries included), black in color, easy to handle, with an attractive design and a 25.5 x 29mm display, MultiChron is the ideal tool for following any type of competition.

Special Start functions:

MultiChron provides two Start modes, depending on the different types of competition:

- 1 - "One Start Mode" allows you to give the start for all the competitors by pressing a single button: this is the case of the races in which all the competitors start at the same time.
- 2 - "Multi Start Mode" is designed for races in which the competitors start at different times, and allows you to activate the stopwatch for each of them independently.

Multi-Key or One Key time detection mode:

With MultiChron it is also possible to detect the times with absolute precision even when the competitors transit at the same time on a given point of the route: selecting "Multi-Key" associates the times to the 4 different competitors by clicking buttons 1, 2, 3 and 4. Selecting "One Key" the 4 times are detected by clicking on the same button and then attributed to the 4 different competitors: it is a very useful function in the event of a sprint finish.

Basic technical characteristics

- Precision to the hundredth of a second
- Weight: 100g batteries included
- Large 25.5 x 29 mm display with backlight
- Stores up to 99 lap times, with 9 split times for each lap
- Up to four competitors with single or multiple start
- Recall data during storage
- Self-shutdown device after inactivity
- Two 3V batteries that allow you not to lose the saved data

Code	Description
MULTICRON-NERO	Hand-held digital lap timer



Intercomp
Spares accessories



These Intercomp Racing sound level meters are excellent for monitoring noise levels to comply with zoning regulations. These self-calibrating compact meters feature a digital display with peak hold and variable response times. A carrying case is included.

- Compact Handheld Sound Meter
- Digital Display
- Battery Operated (9 Volt Battery Included)
- 0-130 dB Range
- Self Calibrating
- Peak Hold
- Variable Response Time
- Carry Case Supplied

Code	Description
360015	Sound level meter



Spares accessories

Ideal for Rally service area or Paddock. Three ways of use:

- Timer - Counts up or counts down
- Interval Timer - Counts down from a user set interval time, an alarm sounds at 00:00, then the unit resets to the original interval time and counts down again.
- Clock - Time of day display in 12h or 24h

The unit can be powered by a mains supply and comes with a European 2 pin plug (a UK adaptor plug is required for 230V UK power supply). Alternatively, a battery is available separately making the clock totally mobile. (see associated items).

Dimensions - 327 x 156 x 93mm, Display - 10cm high digits
Weight - 1.6Kg, Power Draw - Less than 8w

Please note: UNIT IS NOT WATER RESISTANT

Code	Description
RRSBGT	Paddock clock



Intercomp
Spares accessories



Portable Digital Force & Travel Indication
Peak Hold Feature Saves Maximum Reading
Excellent for Valve, Clutch, Shock & Pressure Relief Springs up to 2" (50mm) in Diameter
Readout in 0.2lb (kg) Increments
Backlit for Night Use
Standard 9-Volt Battery Operation
Accuracy: ±0.25% of reading
Capacity: 1,000lb (500kg)
Travel: 4" (100mm)

Code	Description
100058	Valve spring tester



Dino Paoli provides all the F1 teams, F2, F3, DTM, F. Nippon, V8-Supercar, and all the teams in the Endurance, GT, GRAND AM, ALMS, ELMS, IMSA, 24h Le Mans. The group Dino Paoli operates in various sectors: motorsport, automotive and industry. The motorsport sector is committed to the brand **Paoli PIT STOP®**.

The determination to pursue new targets and the courage to walk never-traveled streets are the keys to Paoli's success in the Motorsport world.

The company continuously invests in research and educational training, in order to offer to the racing teams innovative solutions and wheel guns always fitted for the specific needs of the individual championships.



HURRICANE 2.0

- Classic or 90° handle, with Aerospace 7075 aluminum cover. Increase robustness and reliability, with 2 or 3 ports. Faster at reaching the required tightening torque
- Robust and reliable.
- Lost wax casting handle.
- Classic or 90° handle
- Ergonomic trigger
- Built-in FRS
- E-Shuttle (on demand)
- Suitable for Formula 1, Indycar
- Color coding for unscrewing rotation hand

Code	Drive	Direction	Length	Air IN	Supply hose int. Ø	Pressure	Free speed	Max torque	Note	Weight
HURRICANE2.01	square 1"	LH	203 mm	3/8" BSP	13 mm	25 Bar	15000 rpm	4300 Nm	Alu cover - 3 port - 90°	3,90 kg
HURRICANE2.02	square 1"	RH	203 mm	3/8" BSP	13 mm	25 Bar	15000 rpm	4300 Nm	Alu cover - 3 port - 90°	3,90 kg
HURRICANE2.03	square 1"	UH	203 mm	3/8" BSP	13 mm	25 Bar	14800 rpm	4200 Nm	Alu cover - 3 port - 90°	3,90 kg
HURRICANE2.04	square 1"	LH	203 mm	3/8" BSP	13 mm	25 Bar	15000 rpm	4300 Nm	Alu cover - 2 port - 90°	3,90 kg
HURRICANE2.05	square 1"	RH	203 mm	3/8" BSP	13 mm	25 Bar	15000 rpm	4300 Nm	Alu cover - 2 port - 90°	3,90 kg
HURRICANE2.06	square 1"	UH	203 mm	3/8" BSP	13 mm	25 Bar	14800 rpm	4200 Nm	Alu cover - 2 port - 90°	3,90 kg
HURRICANE2.07	square 1"	LH	203 mm	3/8" BSP	13 mm	25 Bar	15000 rpm	4300 Nm	Alu cover - 3 port - classic	3,90 kg
HURRICANE2.08	square 1"	RH	203 mm	3/8" BSP	13 mm	25 Bar	15000 rpm	4300 Nm	Alu cover - 3 port - classic	3,90 kg
HURRICANE2.09	square 1"	UH	203 mm	3/8" BSP	13 mm	25 Bar	14800 rpm	4200 Nm	Alu cover - 3 port - classic	3,90 kg
HURRICANE2.10	square 1"	LH	203 mm	3/8" BSP	13 mm	25 Bar	15000 rpm	4300 Nm	Alu cover - 2 port - classic	3,90 kg
HURRICANE2.11	square 1"	RH	203 mm	3/8" BSP	13 mm	25 Bar	15000 rpm	4300 Nm	Alu cover - 2 port - classic	3,90 kg
HURRICANE2.12	square 1"	UH	203 mm	3/8" BSP	13 mm	25 Bar	14800 rpm	4200 Nm	Alu cover - 2 port - classic	3,90 kg



DP 6000

- With Aerospace 7075 aluminum cover or carbon.
- More powerful
- Magnesium body, metallic powder painted body
- 7 Carbon peek vanes
- Suitable for Formula 1, Indicar, GP2
- Color coding for rotation hand

Code	Drive	Direction	Length	Air IN	Supply hose int. Ø	Pressure	Free speed	Max torque	Note	Weight
006000.00014	square 1"	LH	198 mm	3/8" BSP	13 mm	25 Bar	14700 rpm	4200 Nm	Alu cover - 3 ports	3,54 kg
006000.00015	square 1"	RH	198 mm	3/8" BSP	13 mm	25 Bar	14700 rpm	4200 Nm	Alu cover - 3 ports	3,54 kg
006000.00016	square 1"	UH	198 mm	3/8" BSP	13 mm	25 Bar	14300 rpm	4000 Nm	Alu cover - 3 ports	3,54 kg
006000.00017	square 1"	LH	198 mm	3/8" BSP	13 mm	25 Bar	14700 rpm	4200 Nm	Carbon cover - 3 ports	3,50 kg
006000.00018	square 1"	RH	198 mm	3/8" BSP	13 mm	25 Bar	14700 rpm	4200 Nm	Carbon cover - 3 ports	3,50 kg
006000.00019	square 1"	UH	198 mm	3/8" BSP	13 mm	25 Bar	14300 rpm	4000 Nm	Carbon cover - 3 ports	3,50 kg



DP 6000 90°



- 90° handle, with Aerospace 7075 aluminum cover or carbon.
- More powerful
- Magnesium body, metallic powder painted body
- 7 Carbon peek vanes
- Suitable for Formula 1, Indicar, GP2
- Color coding for rotation hand

Code	Drive	Direction	Length	Air IN	Supply hose int. Ø	Pressure	Free speed	Max torque	Note	Weight
006000.00001	square 1"	LH	198 mm	3/8" BSP	13 mm	25 Bar	14700 rpm	4200 Nm	90° - Alu cover - 3 ports	3,54 kg
006000.00002	square 1"	RH	198 mm	3/8" BSP	13 mm	25 Bar	14700 rpm	4200 Nm	90° - Alu cover - 3 ports	3,54 kg
006000.00003	square 1"	UH	198 mm	3/8" BSP	13 mm	25 Bar	14300 rpm	4000 Nm	90° - Alu cover - 3 ports	3,54 kg
006000.00004	square 1"	LH	198 mm	3/8" BSP	13 mm	25 Bar	14700 rpm	4200 Nm	90° - Carbon cover - 3 ports	3,50 kg
006000.00005	square 1"	RH	198 mm	3/8" BSP	13 mm	25 Bar	14700 rpm	4200 Nm	90° - Carbon cover - 3 ports	3,50 kg
006000.00006	square 1"	UH	198 mm	3/8" BSP	13 mm	25 Bar	14300 rpm	4000 Nm	90° - Carbon cover - 3 ports	3,50 kg



DP 6000 SPLINE



- From PAOLI'S experience and its cutting edge sectorial engineering research a new wheel gun is born: the SPLINE DRIVE DP 6000. The work in R&D of the Paoli highly skilled technicians and the partnership with the most recognized racing teams has allowed the development of an innovative and greatly performing product. A spline drive wheel gun differs from a square drive tool mainly in the teeth that connect the anvil with the socket. Spline drive wheel guns, because of the increased contact points between the anvil and the socket, offer a better torque transmission and a reduced load on each contact point. This means the following ADVANTAGES: more power; more strenght; more endurance. Paoli supplies spline sockets to be used with DP 6000 SPLINE. The wheel nut socket is connected to the anvil by a cutting edge fixing screw system. With Aerospace 7075 aluminum cover or carbon.
- More powerful
 - Magnesium body, metallic powder painted body
 - 7 Carbon peek vanes
 - Suitable for Formula 1, Indicar, GP2
 - Color coding for rotation hand
 - Classic handle versions

Code	Drive	Direction	Length	Air IN	Supply hose int. Ø	Pressure	Free speed	Max torque	Note	Weight
006000.00054	spline	LH	198 mm	3/8" BSP	13 mm	25 Bar	14700 rpm	4200 Nm	Alu cover - 3 ports	3,54 kg
006000.00055	spline	RH	198 mm	3/8" BSP	13 mm	25 Bar	14700 rpm	4200 Nm	Alu cover - 3 ports	3,54 kg
006000.00056	spline	UH	198 mm	3/8" BSP	13 mm	25 Bar	14300 rpm	4000 Nm	Alu cover - 3 ports	3,54 kg
006000.00057	spline	LH	198 mm	3/8" BSP	13 mm	25 Bar	14700 rpm	4200 Nm	Carbon cover - 3 ports	3,50 kg
006000.00058	spline	RH	198 mm	3/8" BSP	13 mm	25 Bar	14700 rpm	4200 Nm	Carbon cover - 3 ports	3,50 kg
006000.00059	spline	UH	198 mm	3/8" BSP	13 mm	25 Bar	14300 rpm	4000 Nm	Carbon cover - 3 ports	3,50 kg



DP 6000 SPLINE 90°



- From PAOLI'S EXPERIENCE and its cutting edge sectorial engineering research a new wheel gun is born: the SPLINE DRIVE DP 6000. The work in R&D of the Paoli highly skilled technicians and the partnership with the most recognized racing teams has allowed the development of an innovative and greatly performing product. A spline drive wheel gun differs from a square drive tool mainly in the teeth that connect the anvil with the socket. Spline drive wheel guns, because of the increased contact points between the anvil and the socket, offer a better torque transmission and a reduced load on each contact point. This means the following ADVANTAGES: more power; more strenght; more endurance. Paoli supplies spline sockets to be used with DP 6000 SPLINE. The wheel nut socket is connected to the anvil by a cutting edge fixing screw system.
- 90° handle versions. Other specifics equal to DP 6000 SPLINE classic handle

Code	Drive	Direction	Length	Air IN	Supply hose int. Ø	Pressure	Free speed	Max torque	Note	Weight
006000.00048	spline	LH	198 mm	3/8" BSP	13 mm	25 Bar	14700 rpm	4200 Nm	90° - Alu cover - 3 ports	3,54 kg
006000.00049	spline	RH	198 mm	3/8" BSP	13 mm	25 Bar	14700 rpm	4200 Nm	90° - Alu cover - 3 ports	3,54 kg
006000.00050	spline	UH	198 mm	3/8" BSP	13 mm	25 Bar	14300 rpm	4000 Nm	90° - Alu cover - 3 ports	3,54 kg
006000.00051	spline	LH	198 mm	3/8" BSP	13 mm	25 Bar	14700 rpm	4200 Nm	90° - Carbon cover - 3 ports	3,50 kg
006000.00052	spline	RH	198 mm	3/8" BSP	13 mm	25 Bar	14700 rpm	4200 Nm	90° - Carbon cover - 3 ports	3,50 kg
006000.00053	spline	UH	198 mm	3/8" BSP	13 mm	25 Bar	14300 rpm	4000 Nm	90° - Carbon cover - 3 ports	3,50 kg



DP 6000 BIAS
 Two wheel guns, one body, this is BIAS system!
 The BIAS SYSTEM gives you both RH and LH versions inside a single wheel gun. Using the special lever you can change the mode during the pitstop.
 This model is particularly suitable for those championships in which the use of a single wheel gun is mandatory. The BIAS SYSTEM is capable to give to the operator all the advantages of both the RH and LH modes in a single wheel gun.
 - Front needle roller bearings
 - New aerospace aluminium 7075 front cover
 - Easy to use as the instructions are engraved on the gun back
 - Simply faster!

Code	Drive	Direction	Length	Air IN	Supply hose int. Ø	Pressure	Free speed	Max torque	Note	Weight
6000BS.0001	square 1"	Biasymmetrical	198 mm	3/8" BSP	13 mm	25 Bar	14300 rpm	3.900 Nm	Carbon cover	3,68 kg
6000BS.0002	square 1"	Biasymmetrical	198 mm	3/8" BSP	13 mm	25 Bar	14300 rpm	3.900 Nm	Alu cover	3,75 kg



SUPERSPORT NEXTGEN
 NEW FAST REVERSE SYSTEM: longer and easier to move. Positioned on the side where the rotation reverse mechanism turns from loosening to tightening.
 NEW RADIAL HAMMER MECHANISM (RHM) INSIDE: The new radial hammer mechanism guarantees a superior performance and a longer lifespan of the hammer mechanism parts, thanks to the new developed geometry.

Code	Drive	Direction	Length	Air IN	Supply hose int. Ø	Pressure	Free speed	Max torque	Note	Weight
SSNXGEN.0001	Square	LH	202 mm	3/8" BSP	13 mm	25 Bar	11500 rpm	3500 Nm	-	4,03 Kg
SSNXGEN.0002	Square	RH	202 mm	3/8" BSP	13 mm	25 Bar	11500 rpm	3500 Nm	-	4,03 Kg
SSNXGEN.0003	square	UH	202 mm	3/8" BSP	13 mm	25 Bar	11000 rpm	2800 Nm	-	4,03 Kg
SSNXGEN.0004	Square	LH	202 mm	3/8" BSP	13 mm	25 Bar	11500 rpm	3500 Nm	-	4,03 Kg
SSNXGEN.0005	Square	RH	202 mm	3/8" BSP	13 mm	25 Bar	11500 rpm	3500 Nm	-	4,03 Kg
SSNXGEN.0006	square	UH	202 mm	3/8" BSP	13 mm	25 Bar	11500 rpm	3500 Nm	-	4,03 Kg



DP 5000 TI MARK II
 Titanium motor
 New stainless steel trigger
 Magnesium alloy body
 7 carbon peek vanes
 Standard carbon cover (aluminium version available)
 Anodized blue and red covers, according to the motorsport tradition
 Suggested coupling & fittings:
 - couplings: minimal bore of 10 mm (25/64")
 - male 1/2" BSP fittings

Code	Drive	Direction	Length	Air IN	Supply hose int. Ø	Pressure	Free speed	Max torque	Note	Weight
5000TI.00019	square 1"	LH	198 mm	3/8" BSP	13 mm	25 Bar	14500 rpm	3800 Nm	Aluminium Cover	3,50 kg
5000TI.00020	square 1"	RH	198 mm	3/8" BSP	13 mm	25 Bar	14500 rpm	3800 Nm	Aluminium Cover	3,50 kg
5000TI.00021	square 1"	UH	198 mm	3/8" BSP	13 mm	25 Bar	14000 rpm	3500 Nm	Aluminium Cover	3,50 kg
5000TI.00022	square 1"	LH	198 mm	3/8" BSP	13 mm	25 Bar	14500 rpm	3800 Nm	Carbon Cover	3,43 kg
5000TI.00023	square 1"	RH	198 mm	3/8" BSP	13 mm	25 Bar	14500 rpm	3800 Nm	Carbon Cover	3,43 kg
5000TI.00024	square 1"	UH	198 mm	3/8" BSP	13 mm	25 Bar	14000 rpm	3500 Nm	Carbon Cover	3,43 kg



DP 4000 MG
 Strong, fast and reliable.
 - Magnesium alloy body
 - Light weight (just 3,64 Kg / 8,02 lbs with carbon cover)
 - More power (13.500 rpm)
 - New Carbon peek valves

Code	Drive	Direction	Length	Air IN	Supply hose int. Ø	Pressure	Free speed	Max torque	Note	Weight
4000MG.00037	square 1"	LH	193 mm	3/8" BSP	13 mm	20 Bar	13500 rpm	3500 Nm	Alu cover - 3 ports	3,71 Kg
4000MG.00038	square 1"	RH	193 mm	3/8" BSP	13 mm	20 Bar	13500 rpm	3500 Nm	Alu cover - 3 ports	3,71 Kg
4000MG.00039	square 1"	UH	193 mm	3/8" BSP	13 mm	20 Bar	12500 rpm	3300 Nm	Alu cover - 3 ports	3,71 Kg
4000MG.00040	square 1"	LH	193 mm	3/8" BSP	13 mm	20 Bar	13500 rpm	3500 Nm	Carbon cover - 3 ports	3,64 kg
4000MG.00041	square 1"	RH	193 mm	3/8" BSP	13 mm	20 Bar	13500 rpm	3500 Nm	Carbon cover - 3 ports	3,64 kg
4000MG.00042	square 1"	UH	193 mm	3/8" BSP	13 mm	20 Bar	12500 rpm	3300 Nm	Carbon cover - 3 ports	3,64 kg



DP 4000 30BAR
 Strong, fast and reliable.
 - 30 BAR
 - Magnesium alloy body
 - Light weight (just 3,64 Kg / 8,02 lbs with carbon cover)
 - More and more power (15.500 rpm)
 - New Carbon peek valves

Code	Drive	Direction	Length	Air IN	Supply hose int. Ø	Pressure	Free speed	Max torque	Note	Weight
400030.00013	square 1"	LH	193 mm	3/8" BSP	13 mm	30 bar	15.500 rpm	3800 Nm	Alu cover - 3 ports	3,90 kg
400030.00014	square 1"	RH	193 mm	3/8" BSP	13 mm	30 bar	15.500 rpm	3800 Nm	Alu cover - 3 ports	3,90 kg
400030.00015	square 1"	UH	193 mm	3/8" BSP	13 mm	30 bar	15.500 rpm	3500 Nm	Alu cover - 3 ports	3,90 kg
400030.00016	square 1"	LH	193 mm	3/8" BSP	13 mm	30 bar	15.500 rpm	3800 Nm	Carbon cover - 3 ports	3,90 kg
400030.00017	square 1"	RH	193 mm	3/8" BSP	13 mm	30 bar	15.500 rpm	3800 Nm	Carbon cover - 3 ports	3,90 kg
400030.00018	square 1"	UH	193 mm	3/8" BSP	13 mm	30 bar	15.500 rpm	3500 Nm	Carbon cover - 3 ports	3,90 kg



DP 2000 SE
 Absolutely the most used wheel gun. Weight reduced thanks to new Aerospace Aluminium 7050. Optional carbon cover. New carbon vanes.

Code	Drive	Direction	Length	Air IN	Supply hose int. Ø	Pressure	Free speed	Max torque	Note	Weight
2000SE.00010	square 1"	LH	186 mm	3/8" BSP	13 mm	20 Bar	9500 rpm	2500 Nm	Alu cover	3,90 Kg
2000SE.00011	square 1"	RH	186 mm	3/8" BSP	13 mm	20 Bar	9500 rpm	2500 Nm	Alu cover	3,90 Kg
2000SE.00012	square 1"	UH	186 mm	3/8" BSP	13 mm	20 Bar	9000 rpm	2200 Nm	Alu cover	3,90 Kg
2000SE.00013	square 1"	LH	186 mm	3/8" BSP	13 mm	20 Bar	9500 rpm	2500 Nm	Carbon cover	3,83 Kg
2000SE.00014	square 1"	RH	186 mm	3/8" BSP	13 mm	20 Bar	9500 rpm	2500 Nm	Carbon cover	3,83 Kg
2000SE.00015	square 1"	UH	186 mm	3/8" BSP	13 mm	20 Bar	9000 rpm	2200 Nm	Carbon cover	3,83 Kg

WHEEL GUNS



 **paoli**
DP 197 SFE

Very reliable! Light weight (just 4,6 Kg / 10 lbs). New aerospace aluminium 7075 front cover. New carbon vanes.

Code	Drive	Direction	Length	Air IN	Supply hose int. Ø	Pressure	Free speed	Max torque	Note	Weight
197SFE.00006	square 1"	LH	200 mm	3/8" BSP	13 mm	20 Bar	7900 rpm	1900 Nm	-	4,60 Kg
197SFE.00007	square 1"	RH	200 mm	3/8" BSP	13 mm	20 Bar	7900 rpm	1900 Nm	-	4,60 Kg
197SFE.00008	square 1"	LH	200 mm	3/8" BSP	13 mm	20 Bar	7900 rpm	1900 Nm	-	4,60 Kg



 **paoli**
DP 177 SFE

The new 1" Paoli wheel gun: fast, powerful and reliable. New carbon vanes, new aerospace aluminium 7075 front cover. Increased max pressure (20 Bar / 290 PSI)

Code	Drive	Direction	Length	Air IN	Supply hose int. Ø	Pressure	Free speed	Max torque	Note	Weight
177SFE.00004	square 1"	LH	193 mm	3/8" BSP	13 mm	20 Bar	10000 rpm	1900 Nm	2 port	4,20 Kg
177SFE.00005	square 1"	RH	193 mm	3/8" BSP	13 mm	20 Bar	10000 rpm	1900 Nm	2 port	4,20 Kg
177SFE.00006	square 1"	UH	193 mm	3/8" BSP	13 mm	20 Bar	9500 rpm	1800 Nm	2 port	4,20 Kg



 **paoli**
DP 176 SFE

The Porsche wheel gun! Light weight (just 3,95 Kg / 8,7 lbs). New aerospace aluminium 7075 front cover. Increased max pressure (20 Bar / 290 PSI). New carbon vanes.

Code	Drive	Direction	Length	Air IN	Supply hose int. Ø	Pressure	Free speed	Max torque	Note	Weight
176SFE.00005	square 3/4"	LH	185 mm	3/8" BSP	13 mm	20 Bar	10000 rpm	1700 Nm	2 port	3,95 Kg
176SFE.00006	square 3/4"	RH	185 mm	3/8" BSP	13 mm	20 Bar	10000 rpm	1700 Nm	2 port	3,95 Kg
176SFE.00007	square 3/4"	UH	185 mm	3/8" BSP	13 mm	20 Bar	9500 rpm	1700 Nm	2 port	3,95 Kg



 **paoli**
BLUE DEVIL

Lightweight but very fast and powerful! Operating pressure 20 Bar / 290 PSI. New carbon vanes, optimized and efficient exhaust (patented system). 90° handle.

Code	Drive	Direction	Length	Air IN	Supply hose int. Ø	Pressure	Free speed	Max torque	Note	Weight
BDEVIL.00002	square 3/4"	LH (60/40)	188 mm	3/8" BSP	13 mm	20 Bar	17000 rpm	1200 Nm	60/40	2,69 Kg
BDEVIL.00004	square 3/4"	RH (60/40)	188 mm	3/8" BSP	13 mm	20 Bar	17000 rpm	1200 Nm	60/40	2,69 Kg
BDEVIL.00006	square 3/4"	LH (70/30)	188 mm	3/8" BSP	13 mm	20 Bar	17500 rpm	1200 Nm	70/30	2,69 Kg
BDEVIL.00008	square 3/4"	RH (70/30)	188 mm	3/8" BSP	13 mm	20 Bar	17500 rpm	1200 Nm	70/30	2,69 Kg



Very fast! Additional air exhausts to increase the speed. New carbon vanes developed for 5 nuts.

Code	Drive	Direction	Length	Air IN	Supply hose int. Ø	Pressure	Free speed	Max torque	Note	Weight
36SFEV.00005	square 1/2"	LH	161 mm	3/8" BSP	13 mm	14 Bar	14500 rpm	850 Nm	-	2,23 Kg
36SFEV.00006	square 1/2"	RH	161 mm	3/8" BSP	10 mm	14 Bar	14500 rpm	850 Nm	-	2,23 Kg



The first electric wheel gun to be officially used in a motorsport world championship, is now available to the market. The cordless Paoli impact wrench with highest power density has been equipped with an electric system for MONITORING THE NUT TIGHTENING. On top of highlighting errors during nut installation, the LED INDICATOR SYSTEM allows to have a more consistent value of torque during tightening, leading to OPTIMISED TYRE CHANGING TIMES during pit stops. Performance can be further refined with a tailored CALIBRATION FOR EACH VEHICLE, HUB AND SOCKET UTILISED.

Code	Drive	Direction	Length	Air IN	Supply hose int. Ø	Pressure	Free speed	Max torque	Note	Weight
A.08.0049	square	LH	253 mm	-	-	-	1650 rpm	1600 Nm	-	4,3 Kg (with battery)
A.08.0050	square	RH	253 mm	-	-	-	1650 rpm	1600 Nm	-	4,3 Kg (with battery)
A.08.0051	spline	LH	253 mm	-	-	-	1650 rpm	1600 Nm	-	4,3 Kg (with battery)
A.08.0052	spline	RH	253 mm	-	-	-	1650 rpm	1600 Nm	-	4,3 Kg (with battery)



Cordless wheel gun with 1" square drive for motorsport application. Aeronautical aluminium.

- Much more reliable with the new flanged shaft
- Motorsport socket connection
- Ergonomic handle
- Weight 3.5 kg (7.7 lbs)
- Max Torque 1600 Nm (1180 ft-lbs)
- Lithium ion battery 20.0V d.c., 4.0 Ah
- Fast battery charger
- Led light on the working point during use
- Battery level indicator
- Provided in a hard case
- Including: No. 2 Ultra Power batteries, a cable and a re-charger
- Measure: 260 (L) x 84 (W) x 278 (H) mm

Code	Drive	Direction	Length	Air IN	Supply hose int. Ø	Pressure	Free speed	Max torque	Note	Weight
A.08.0024	spline	-	260 mm	-	-	-	1650 rpm	1600 Nm	-	3,50 Kg (with battery)



TYPHOON 1"
 Cordless wheel gun with 1" square drive for motorsport application
 WEIGHT 3.4 kg (7.5 lbs)
 MAX TORQUE 1300 Nm (958 ft-lbs)
 VOLTAGE 20.0V d.c.
 Fast, powerful and reliable
 Provided in a hard case
 Including: No. 2 Ultra Power batteries, a cable and a re-charger

Code	Drive	Direction	Length	Free speed	Max torque	Weight
A.08.0014	square 1"	-	260 mm	1650 rpm	1600 Nm	3,40 Kg (with battery)



TYPHOON 3/4"
 Weight 3.66 kg (8.07 lbs)
 Max Torque 1000 Nm (885 ft-lbs)
 Voltage 20.0V d.c.
 - Fast and powerful
 - Provided in a hard case
 - 2 Batteries included, one in use and one as a spare

Code	Drive	Direction	Length	Free speed	Max torque	Weight
A.08.0006	square 1/2"	-	231 mm	1650 rpm	880 Nm	3,66 Kg (with battery)
A.08.0007	square 3/4"	-	233 mm	1650 rpm	1000 Nm	3,70 Kg (with battery)



ROCKET
 Fast and powerful cordless wheel gun, lightweight (2.15 kg without battery) and compact. Recommended for use in garages where compressed air is not available and when the torque required is lower.
 - Integrated Torque Control System (6 levels)
 - Two jaws mechanism
 - Free speed: 1650 rpm
 - Supplied in rigid storage
 - 18.0V DC lithium ion battery
 - 2 batteries included: one in use and one in stock.
 - Measurements (LxWxH): 242x80x255 mm.

Code	Drive	Direction	Length	Free speed	Max torque	Weight
A.08.0004	square 1/2"	LH	242 mm	1650 rpm	540 Nm	2,5 w/o battery



TORNADO
 Fast and powerful
 - Provided in a hard case
 - 2 Batteries included, one in use and one as a spare
 - New lithium battery 18.0 V D.C.
 - Selector switch (3 position)
 - Led light on the working point during use

Code	Drive	Direction	Length	Free speed	Max torque	Weight
A.08.0037	quadro 1/2"	-	170 mm	2450 rpm	461 Nm	2,1 (with battery)

paoli
Main hoses



Code	Length	Diameter	Connector
B.20.01.0001	46 cm	13 mm int. - 23,5 mm ext.	Turning
B.20.01.0002	46 cm	13 mm int. - 23,5 mm ext.	Swivel
B.20.01.0007	46 cm	13 mm int. - 23,5 mm ext.	3-R Turning

paoli
75 Bar Hoses

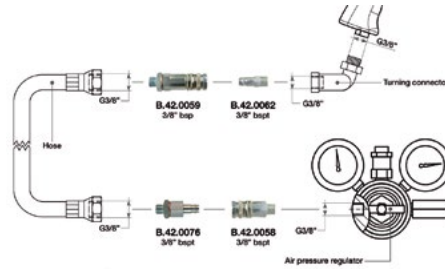


Code	Length	Diameter	Connector
B.41.1001	1 m	13 mm int. - 23,5 mm ext.	-
B.41.1002	2 m	13 mm int. - 23,5 mm ext.	-
B.41.1003	3 m	13 mm int. - 23,5 mm ext.	-
B.41.1004	4 m	13 mm int. - 23,5 mm ext.	-
B.41.1005	5 m	13 mm int. - 23,5 mm ext.	-

20 bar and 75 bar hoses are not equipped with connectors. Please, specify connector angle (0°, 45°, 90°) and thread (male or female, 1/2" GAS, 3/8" GAS, 3/8" NPT)

paoli
High Flow

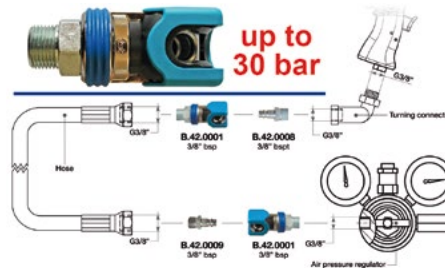
Automatic safety-locking feature. Extremely high flow capacity. One-hand operated.



Code	Side	Type	Thread	Inside Ø
B.42.0058	Air pressure regulator	Female	3/8" BSPT	10,4 mm
B.42.0059	Wheel gun	Female	3/8" BSP	10,4 mm
B.42.0062	Wheel gun	Male	3/8" BSPT	10,4 mm
B.42.0076	Air pressure regulator	Male	3/8" BSPT	10,4 mm

paoli
Standard

Standard series for daily use.



Code	Side	Type	Thread	Inside Ø
B.42.0001	Regulator or gun	Female	3/8" BSP	8 mm
B.42.0008	Wheel gun	Male	3/8" BSPT	7,6 mm
B.42.0009	Wheel gun	Male	3/8" BSP	7,6 mm



paoli
Protections

Code	For gun	Material
B.18.0000	DP 2000 S, SE	Transparent plastic
B.18.0001	DP 197 SFE	Transparent plastic
B.18.0003	DP 176 SFE - DP 177 SFE	Transparent plastic
B.18.0006	DP 36 SF EVO - 4BIKE	Transparent plastic
B.18.0013	DP 6000 DP 5000 TI DP 4000 MG	Transparent plastic
B.18.0019	BLUE DEVIL	Transparent plastic
B.18.0021	DP 4000 MG TS LAB (right led box)	Transparent plastic
B.18.0023	SUPER SPORT	Transparent plastic
B.18.0024	DP 4000 BIAS	Transparent plastic
B.18.0027	DP 4000 MG TS LAB (left led box)	Transparent plastic
B.18.0030	DP 5000 TI (with fast shuttle) DP 4000 MG (with fast shuttle)	Transparent plastic
B.18.0043	DP 5000 BIAS - DP 6000 BIAS	Transparent plastic
B.18.0050	HURRICANE	Transparent plastic

paoli
Wheel Nut Sockets

Dino Paoli (Paoli Pit Stop) Sockets with finger and magnets, double version Aerospace Aluminium and Titanium, for all the most common race cars. Contact Gieffe Racing for more info.



Code	Application	Material	Square drive
B.28.0051	Ferrari F488	Aluminium	1"
B.28.0058	Ferrari F488	Titanium	1"

paoli
Accessories

Code	Description
C.01.0003	Simple Air bottle trolley



paoli
Accessories

Code	Description
C.01.0002	Double air bottle trolley

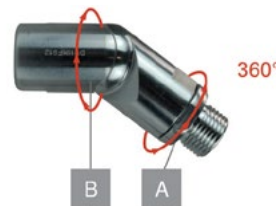




Code	Capacity	Material	Type of connection	Connection	Pressure
B.22.01.00.12	9 l	Carbon	Simple	INT - Female / DIN Male	300 bar
B.22.01.00.13	9 l	Carbon	Double	INT - Female / DIN Male	300 bar
B.22.01.0000	15 l	Aluminium	Simple	INT - Female / DIN Male	232 bar
B.22.01.0001	18 l	Aluminium	Double	INT - Female / DIN Male	220 Bar
B.22.01.0002	18 l	Aluminium	Simple	INT - Female / DIN Male	220 Bar
B.22.01.0003	15 l	Aluminium	Double	INT - Female / DIN Male	232 Bar
B.22.01.0014	9 l	Carbon	Double	INT - Female / DIN Male	300 bar
C.01.0009	1 l	Aluminium	Simple	INT - Female / DIN Male	200 bar



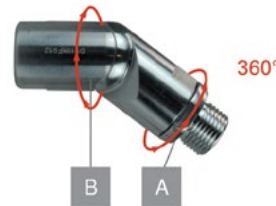
Code	Description
C.01.0010	Kit trolley + Simple Air bottle



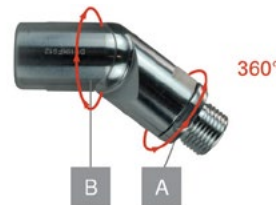
Code	Description
B.43.0001	3/8" BSP male/female-360 °Turn.-90° Flex. hose connector



Code	Description
C.01.0019	Kit trolley "AIR JACK" + Simple Air bottle 15l



Code	Description
B.43.0004	1/4" NPT male/female-360 °Turn.-90° Flex. hose connector



Code	Description
B.43.0007	1/2" BSP male/female-360 °Turn.-90° Flex. hose connector



Code	Description
C.01.0011	Kit trolley + double Air bottle



Code	Description
B.45.0003	25 Bar oiler



Code	Description
C.01.0021	Kit trolley "TRACK DAYS" + Simple Air bottle 15l



Code	Description
B.45.0004	High pressure 40 Bar oiler

AIR PRESSURE REGULATORS



Model F1

Two models in 1!
 F1 can be converted into the F2 model with just one overpressure valve adjustment and replacement of spring, plate and pressure gauge
 Piston mechanism
 Thread IN = 1/4" BSP
 Thread OUT = 3/8" BSP
 Flow = Medium

Codice	IN pressure	Max flow	IN manometer	OUT manometer	Adjustment system	Color	Application
B.40.0001	220 Bar	150 Nm3/h	0-450 Bar	0-60 Bar	Over pressure 30 Bar	Silver	Airjack & airguns.
B.40.0040	350 Bar	200 Nm3/h	0-450 Bar	0-60 Bar	Over pressure 30 Bar	Silver	Airjack & airguns.
B.40.0002	220 Bar	150 Nm3/h	0-450 Bar	0-100 Bar	Over pressure 50 Bar	Silver	Airjack & airguns.
B.40.0041	350 Bar	200 Nm3/h	0-450 Bar	0-100 Bar	Over pressure 50 Bar	Silver	Airjack & airguns.



Model F4

Piston mechanism
 Thread IN = 1/4" BSP
 Thread OUT = 3/8" BSP
 Flow = high

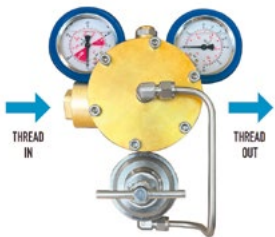
Codice	IN pressure	Max flow	IN manometer	OUT manometer	Adjustment system	Color	Application
B.40.0005	220 Bar	400 Nm3/h	0-450 Bar	0-60 Bar	Over pressure 50 Bar	Gold	Airjack & airguns.
B.40.0042	350 Bar	500 Nm3/h	0-450 Bar	0-100 Bar	Over pressure 50 Bar	Gold	Airjack & airguns.



Model F5

Thread IN = 1/4" BSP
 Thread OUT = 3/8" BSP
 Flow = high

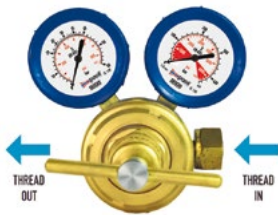
Codice	IN pressure	Max flow	IN manometer	OUT manometer	Adjustment system	Color	Application
B.40.0103	350 Bar	500 Nm3/h	0-450 Bar	0-100 Bar	Over pressure 50 Bar	Gold	Airjack & airguns.



Model F9 2.0

Piston mechanism
 Thread IN = 1/4" BSP
 Thread OUT = 3/8" BSP
 Flow = high

Codice	IN pressure	Max flow	IN manometer	OUT manometer	Adjustment system	Color	Application
B.40.0104	220 Bar	400 Nm3/h	0-450 Bar	0-60 Bar	Over pressure 40 Bar	Gold	Airjack & airguns.
B.40.0106	350 Bar	500 Nm3/h	0-450 Bar	0-100 Bar	Over pressure 40 Bar	Gold	Airjack & airguns.



Model F40

Diaphragm mechanism
 Thread IN = 1/4" BSP
 Thread OUT = 1/2" BSPT
 Flow = high

Codice	IN pressure	Max flow	IN manometer	OUT manometer	Adjustment system	Color	Application
B.40.0049	300 Bar	700 Nm3/h	0-450 Bar	0-60 Bar	Over pressure 40 Bar	Gold	Airjack & airguns.



DPH380



DPH220



DPH460



DPH380-PLUS



DPH220-PLUS



DPH460-PLUS

Codice	Capacity	Operating Pressure	Engine	Time To Recharge	Noise Level	Weight	Dimensions	Product name
B.21.0101	300 l/min	300 Bar	Three-phase Electric 7,5 HP	6' 44"	78 dB	137 Kg (dry)	118 x 54 x 69 cm	DPH380
B.21.0102	100 l/min	300 Bar	Single-phase Electric 3,0 HP	20'	79 dB	42,5 Kg (dry)	58 x 41 x 41 cm	DPH220
B.21.0103	100 l/min	300 Bar	Subaru Robin Petrol 6,0 HP	20'	84 dB	42 Kg (dry)	75,5 x 39 x 41 cm	DPH460
B.21.0280	100 l/min	232-300-330 bar	Single-phase Electric 3,0 HP	20'	72 dB	57,1 kg (seco)	59,2 x 38 x 42,7 cm	DPH220-PLUS
B.21.0281	315 l/min	232-300-330 bar	Three-phase Electric 7,5 HP	6' 20"	72 dB	152 Kg (dry)	112 x 63 x 77 cm	DPH380-PLUS
B.21.0282	100 l/min	232-300-330 bar	Honda HP 200 Petrol 7,7 HP	20'	80,5 dB	53 Kg (dry)	75,5 x 39 x 41 cm	DPH460-PLUS

