

A1 INSTALLATION DRAWING

IF THIS DOCUMENT IS PRINTED IN HARDCOPY, IT IS FOR INFORMATION USE ONLY AND THEREFORE IS NOT SUBJECT TO UPDATING CONTROLS. ALWAYS REFER TO SOLIDWORKS VIEWER FOR LATEST ISSUE



THIS DRAWING IS CONFIDENTIAL AND IS SUPPLIED ON THE EXPRESS CONDITION THAT IT SHALL NOT BE LOANED OR COPIED OR DISCLOSED TO ANY OTHER PERSON OR USED FOR ANY OTHER PURPOSE WITHOUT THE WRITTEN CONSENT OF AP RACING LTD.

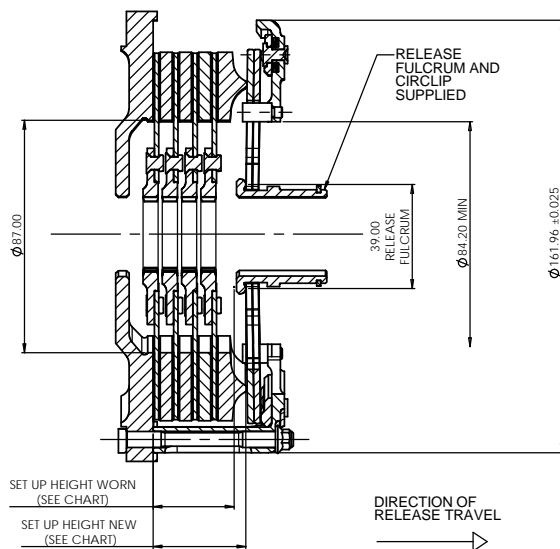
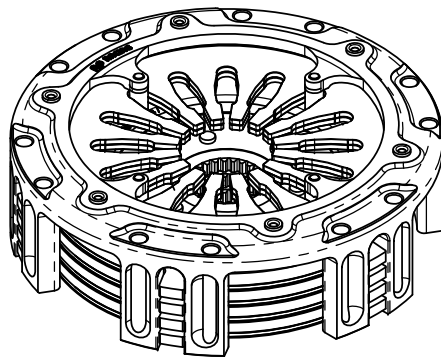


AP Racing
Wheler Road
Coventry
CV3 4LB

Tel: +44 (0) 24 7663 9595
Fax: +44 (0) 24 7663 9559
e-mail: engineering@apracings.co.uk
Web site: http://www.apracings.com

© AP Racing Ltd. 2018

CP8884 Ø140mm (5.5") CUSHIONED PULL TYPE SINTERED CLUTCH ASSEMBLY.



CP8884 CLUTCH FAMILY

| | | | |
|--|--------------------------|-------------|-----------------|
| MAXIMUM DYNAMIC TORQUE CAPACITY | | | |
| (Nm) | 1392 | | |
| (ft.lb) | 1026 | | |
| RELEASE LOAD | | | |
| Max. Peak Worn (N) | 5300 | | |
| At Travel (N) | 5300 | | |
| WEAR IN (See Note) | | | |
| | 1.50 | | |
| Set Up Height New | | | |
| | 37.43 | | |
| Set Up Height Worn | | | |
| | 33.95 | | |
| (Set Up Height is calculated from the flywheel friction face.) | | | |
| Release Ratio | | | |
| | 4.41 | | |
| Assembly Mass | | | |
| | 4.00kg | Steel Cover | Aluminium Cover |
| Assembly Inertia | | | |
| | 0.0136 kg.m ² | n/a | n/a |
| Estimated Driven Plate Inertia = 0.0024175 Kgm ² | | | |
| PERFORMANCE SUFFIX | | | |
| | OH | | |
| For Reference | | | |
| Diaphragm Spring Rate | | | |
| | ORA | | |
| Clutch Ratio | | | |
| | HiR | | |

| | | | |
|------------------------|-----------------------|------------------------------|-------------------------------|
| MATERIAL SUFFIX | COVER MATERIAL | DRIVEN PLATE MATERIAL | DRIVEN PLATE THICKNESS |
| 90 | STEEL | SINTERED | 2.63mm |

| | | |
|---------------------------|---------------|-----------------------------------|
| FLYWHEEL TYPE | | |
| | SUFFIX | COMMENTS |
| STANDARD FLAT FLYWHEEL | FR | FOR INSTALLATION DATA SEE SHEET 2 |
| STANDARD STEPPED FLYWHEEL | SR | n/a |

Sample AP Racing Part No. **CP8884-OH90-FR**

| | | | |
|--|------------------|------------------|------------------|
| WEAR IN | | | |
| THIS CLUTCH HAS BEEN DESIGNED FOR THE WEAR IN INDICATED ABOVE, | | | |
| DRIVEN PLATE THICKNESS NEW: 2.63mm MIN | | | |
| | FOR 0.75 WEAR-IN | FOR 1.25 WEAR-IN | FOR 1.50 WEAR-IN |
| DRIVEN PLATE THICKNESS WORN: | n/a | n/a | 2.26 |

| | |
|--|-----------------|
| DRIVEN PLATES AVAILABLE WITH THE FOLLOWING SPLINE SIZES | |
| SPLINE | PART No. |
| 1"X23T | |
| 7/8" x 20T | |
| 1 5/32" x 26T | CP3683-17FM3 |
| 29.0 x10T | |
| 1 1/8" x10T | |

| | | | |
|--------------------|-----------------------|-----------------------------|-------------|
| Alterations | | | |
| Issue No. | Date & No. | Particulars | Zone |
| 1 | 05/10/18 | FIRST ISSUE | # |
| 2 | 01/11/18 | SUH NEW CORRECTED WAS 37.34 | # |
| 3 | 20/12/18 | RELEASE LOAD VALUES ADDED | # |

| | |
|---------------------|---|
| SCALE 1:1 | SHEET 1 OF 3 |
| DRAWN | OLIVER MERCER |
| APPROVED | |
| DERIVED FROM | CP8804CD |
| TITLE | Ø140mm (5.50") QUAD PLATE I-DRIVE CLUTCH ASSEMBLY |
| DRG NO. | CP8884CD |

FOR OPTIONAL PULL TYPE SLAVE CYLINDER DETAIL SEE SHEET 3

A1 INSTALLATION DRAWING

IF THIS DOCUMENT IS PRINTED IN HARDCOPY, IT IS FOR INFORMATION USE ONLY AND THEREFORE IS NOT SUBJECT TO UPDATING CONTROLS. ALWAYS REFER TO SOLIDWORKS VIEWER FOR LATEST ISSUE



THIS DRAWING IS CONFIDENTIAL AND IS SUPPLIED ON THE EXPRESS CONDITION THAT IT SHALL NOT BE LOANED OR COPIED OR DISCLOSED TO ANY OTHER PERSON OR USED FOR ANY OTHER PURPOSE WITHOUT THE WRITTEN CONSENT OF AP RACING LTD.



AP Racing
Wheler Road
Coventry
CV3 4LB

Tel: +44 (0) 24 7663 9595
Fax: +44 (0) 24 7663 9559
e-mail: engineering@apracings.co.uk
Web site: <http://www.apracings.com>

© AP Racing Ltd. 2018

RECOMMENDED CLUTCH MOUNTING :
(FOR ALL TYPES OF ASSEMBLY)
M6 x 1.0, CP4703 FAMILY STUD AND K-LOCK NUT.
NUTS TO BE TIGHTENED IN A DIAMETRICALLY-OPPOSITE SEQUENCE, HALF A TURN AT A TIME
TIGHTENING TORQUE : 10Nm (7.5 ft.lb)

LENGTH OF STUD REQUIRED TO BE CALCULATED THUS :

STUD LENGTH = DIMENSIONS 'C' + 'F' + ('R' OPTIONAL) + NUT

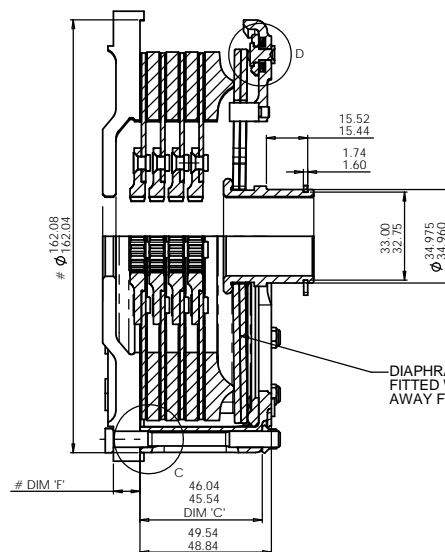
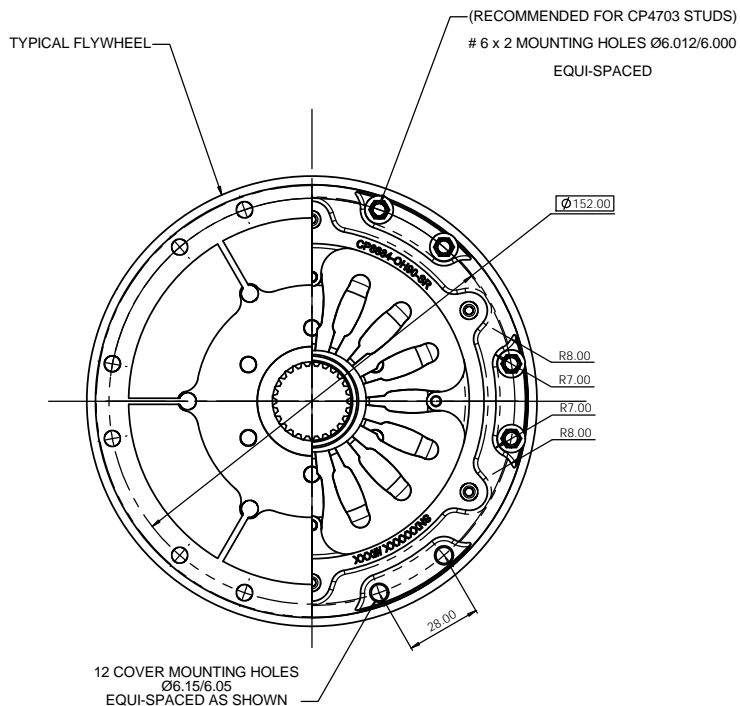
THIS CALCULATED LENGTH TO BE ROUNDED UP TO THE NEXT AVAILABLE STANDARD STUD LENGTH.

THIS ASSEMBLY IS SUPPLIED NEW WITH AN INSTALLATION PLATE AS SHOWN. THIS IS TO ALLOW THE ASSEMBLY TO BE BOLTED TO THE FLYWHEEL WITHOUT DAMAGING ANY OF THE CLUTCH COMPONENTS.

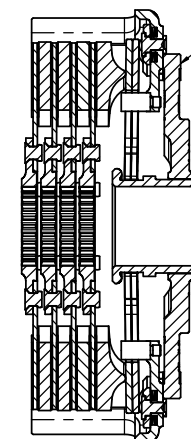
AFTER BOLTING THE CLUTCH TO THE FLYWHEEL REMOVE THE CIRCLIP AND INSTALLATION PLATE AND RETAIN FOR USE WHEN REMOVING THE ASSEMBLY FROM THE FLYWHEEL.

NOTE WHEN REMOVING A WORN CLUTCH ASSEMBLY THE INSTALLATION PLATE IS TO BE FITTED WITH THE 'WORN CONDITION - THIS SIDE UP' INSTRUCTION ON THE OUTSIDE.

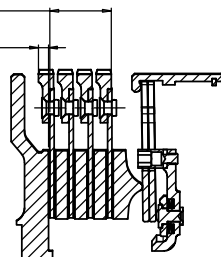
WHEN RETURNING THIS CLUTCH ASSEMBLY BACK TO AP RACING FOR RECONDITIONING PLEASE RETURN WITH THIS INSTALLATION PLATE FITTED.



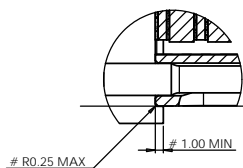
DIAPHRAGM SPRINGS TO BE FITTED WITH COATED FACES AWAY FROM THE FLYWHEEL.



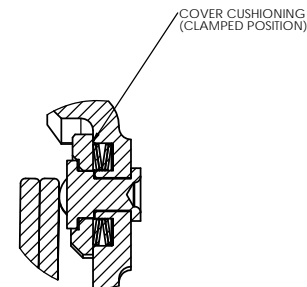
24.00 MAXIMUM NEW
4.25 MAXIMUM WORN



FLYWHEEL DIMENSIONS



DETAIL C
SCALE 2 : 1



DETAIL D
SCALE 3 : 1

| Issue No. | Alterations | | Zone | Initials |
|-----------|-------------|------------------------------------|------|----------|
| | Date & No. | Particulars | | |
| | | SEE SHEET 1 FOR ISSUE INFORMATION. | | |

| | |
|--|---------------|
| SCALE 1:1 | SHEET 2 OF 3 |
| DRAWN | OLIVER MERCER |
| APPROVED | |
| DERIVED FROM | CP8804CD |
| TITLE | |
| Ø140mm (5.50") QUAD PLATE I-DRIVE CLUTCH ASSEMBLY | |
| DRG NO. | CP8884CD |

A1 INSTALLATION DRAWING

IF THIS DOCUMENT IS PRINTED IN HARDCOPY, IT IS FOR INFORMATION USE ONLY AND THEREFORE IS NOT SUBJECT TO UPDATING CONTROLS. ALWAYS REFER TO SOLIDWORKS VIEWER FOR LATEST ISSUE

 **FIRST ANGLE PROJECTION**

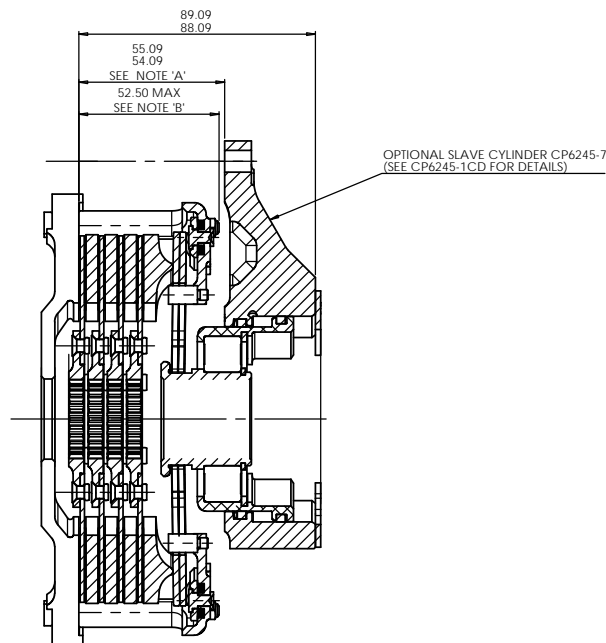
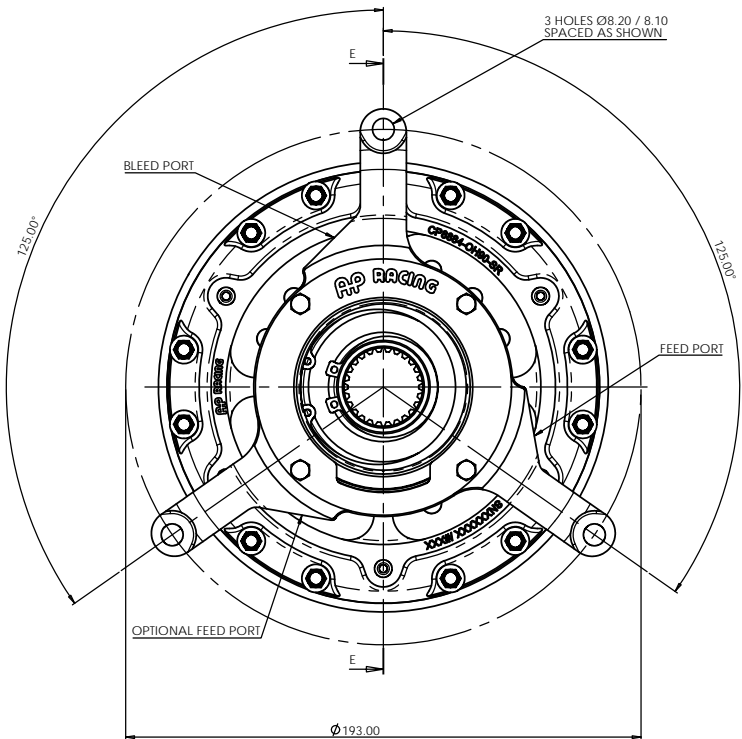
THIS DRAWING IS CONFIDENTIAL AND IS SUPPLIED ON THE EXPRESS CONDITION THAT IT SHALL NOT BE LOANED OR COPIED OR DISCLOSED TO ANY OTHER PERSON OR USED FOR ANY OTHER PURPOSE WITHOUT THE WRITTEN CONSENT OF AP RACING LTD.



AP Racing
Wheler Road
Coventry
CV3 4LB

Tel: +44 (0) 24 7663 9595
Fax: +44 (0) 24 7663 9559
e-mail: engineering@apracings.co.uk
Web site: <http://www.apracings.com>

© AP Racing Ltd. 2018



NOTE 'A'
THIS DIMENSION MUST BE MAINTAINED BY THE USE OF CORRECT LENGTH STUDS/SLEEVES TO ENSURE PROPER FUNCTIONING OF THE RELEASE MECHANISM.

NOTE 'B'
IN THE CASE OF 'OVER LONG' MOUNTING STUD PROTRUSION THROUGH NUT SOME MACHINING OF STUD LENGTH MAY BE REQUIRED.

PLEASE CHECK SLAVE CLEARANCE

SLAVE CYLINDER SET-UP HEIGHT FROM NEW MUST MAKE ALLOWANCES FOR MAXIMUM CLUTCH WEAR-IN (1.50 mm) AND MAXIMUM RELEASE TRAVEL (4.00mm).

| ISSUE No. | Alterations | | | Zone | Initials |
|-----------|-------------|------------------------------------|---|------|----------|
| | Date & No. | Particulars | | | |
| - | - | SEE SHEET 1 FOR ISSUE INFORMATION. | - | - | - |

| | |
|---|---------------|
| SCALE 1:1 | SHEET 3 OF 3 |
| DRAWN | OLIVER MERCER |
| APPROVED | |
| DERIVED FROM | CP8804CD |
| TITLE | |
| Ø140mm (5.50") QUAD PLATE I-DRIVE CLUTCH ASSEMBLY | |
| DRG NO. | CP8884CD |